

# UNIVERSAL

Dye Alkali Mixer

Series : DAM\_ & DAM-EC

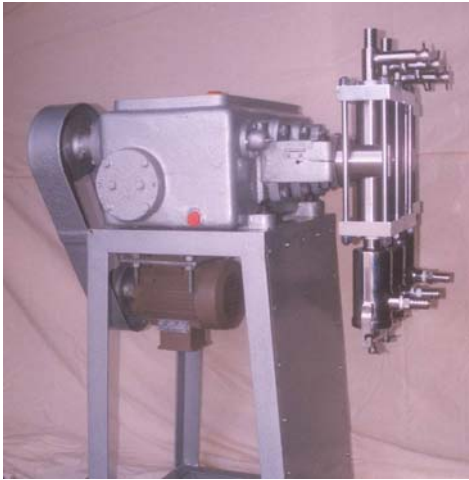
## APPLICATION

Cold Padding of Short, Long batches with short or long fixation time.

## METHOD EMPLOYED

Single Padding - Pad - batch cold with 'Short' or 'Long' fixation time.

## GENERAL FEATURES OF SERIES DAM -



Unit comprises of an accurate Reciprocating Plunger Pump driven through an AC motor.

- Optional - Pump heads in Hydraulic Diaphragm construction.

Unit has three pumping heads, one handles alkali solution, balance two handles dye solution.

Capacity of the unit can be varied manually with a single control without affecting the set ratio of the unit. depending on the speed of the mangle, quality of fabric etc, while the unit is running or at rest.  
- Optional mechanism to control flow of liquor as per speed of mangle available upon request.

**Various Dye - Alkali ratios possible** depending upon the process chosen. Ratios possible 1 : 4, 2 : 3, 1 : 1, 1 : 2. Any ratio as above can be pre set by a very simple positive method. Once the ratio is set there is no possibility of change in prefixed ratio.

## Available in Three separate Models

MODEL	CAPACITY - LPM
DAM-1	5
DAM-2	7.5
DAM-3	10
DAM-3SP	15, 20, 25, 30, 40

Models with higher capacities for extra heavy, high width fabrics also available upon request.

## GENERAL FEATURES OF SERIES DAM- EC

Unit comprises of an accurate duplex reciprocating plunger pump driven through an AC motor.  
- Optional Hydraulic Diaphragm type units also available.

Unit comprises of two heads, one for handling dye and other for alkali.

Capacity of the unit can be varied with single control without affecting the set ratio of the unit.

**Only single fixed ratio possible**, Choice of ratios 1 : 1, 4 : 1, 1 : 3, 3 : 2, This prefixed ratio can not be changed.

An economic unit as compared to Series DAM - units, However ratio flexibility facility not available.

## Available in Three Models :

MODEL	CAPACITY - LPM
DAM-1EC	5.0
DAM-2EC	7.5
DAM-3EC	10; 15; 20; 25; 30

## SPECIFIC ADVANTAGES OF DYEING REACTIVE DYES WITH UNIVERSAL DYE ALKALI MIXER

- 1 Saving of Color value to minimum 15%
- 2 Uniform Dyeing without TAILING effect.
- 3 Brilliancy of shade is better than PAD-DRY-BAKE method
- 4 Wastage of color is less as Dye and Alkali are mixed only in the mangle trough
- 5 All types of reactive dyes which are available in the market can be dyed without any difficulty.
- 6 The unit if of single robust construction and practically does not require any maintenance.
- 7 Ideal unit for dyeing fabrics from 1000 to 10,000 mtrs in one single lengths.

062k1damcat

## MATZ PUMPS PRIVATE LIMITED

12/B, Bhavna Society, Gitamandir Road, AHMEDABAD – 380 022 – INDIA  
Tel : 079-25323321, 25323182, Fax : 079-25324394, e-mail : [matzpump@satyam.net.in](mailto:matzpump@satyam.net.in)

Manufactured by :

Shree Rajeshwari Engineering Works, 2, Anant Industrial Estate, Rakhial, AHMEDABAD – 380 023